



EDUCATION BROCHURE



gvav.com

HDMI CABLES

Lindy HDMI cables are the reliable choice for educational installations, ensuring clear audio and video transmission between devices such as projectors and computers.

With their durable design, these cables can withstand classroom demands, contributing to a seamless learning experience through high-definition content delivery.

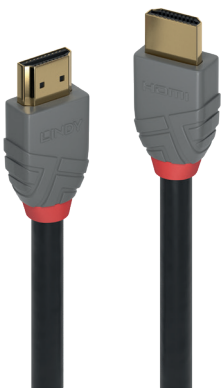
BLACK LINE HDMI CABLE



- HDMI 2.0 cable for home, education and small office applications
- Supports UHD 4K resolutions up to 4096x2160@60Hz

0.5m	No. 36470
1m	No. 36471
2m	No. 36472
3m	No. 36473
5m	No. 36474
7.5m	No. 36467
10m	No. 36468
15m	No. 36469

ANTHRA LINE HDMI CABLE



- Professional choice HDMI 2.0 cable for commercial and high performance AV and IT installations
- Supports UHD 4K resolutions up to 4096x2160@60Hz

0.3m	No. 36960
0.5m	No. 36961
1m	No. 36962
2m	No. 36963
3m	No. 36964
5m	No. 36965
7.5m	No. 36966
10m	No. 36967
15m	No. 36968
20m	No. 36969

FIBRE OPTIC HYBRID HDMI 8K60 CABLE



- Long distance HDMI solution
- Hybrid design combines copper and fibre optic cable for reliable extended performance
- Supports video resolutions up to UHD 8K 7680x4320@60Hz and 4K 4096x2160@120Hz

10m	No. 38510
15m	No. 38511
20m	No. 38512
30m	No. 38513
40m	No. 38514
50m	No. 38515

USB TYPE C CABLES

With their durable construction and high-speed capabilities, Lindy USB Type C cables ensure that students and educators can share information effortlessly, enhancing collaborative learning and efficient technology integration.

Stay ahead of the class with Lindy's reliable and versatile Type C cables.

3m USB 3.2 GEN 2 C/C ACTIVE CABLE



- 3m USB 3.2 Gen 2 Active Cable for data and video extension
- Data transfer rates up to 10Gbps
- Supports DisplayPort 1.4 Alternate Mode
- Supports video resolutions up to UHD 8K 7680x4320@60Hz and 4K 4096x2160@120Hz

No. 43348

5m ACTIVE USB 3.2 GEN 2 C/C CABLE



- 5m USB 3.2 Gen 2 Active Cable for data and video extension
- Data transfer rates up to 10Gbps
- Supports DisplayPort 1.4 Alternate Mode
- Supports video resolutions up to UHD 8K 7680x4320@60Hz and 4K 4096x2160@120Hz

No. 43308

10m USB 3.2 GEN 1 & DP 1.4 TYPE C HYBRID CABLE



- 10m USB 3.2 Gen 1 & DP 1.4 Type C Hybrid Cable for data and video extension
- Data transfer rates up to 5Gbps
- Supports DisplayPort 1.4 Alternate Mode with video resolutions up to 4K 3840x2160@60Hz
- Supports Power Delivery up to 60W (20V 3A)

No. 43333

USB EXTENSION SYSTEM PRO

Surpass traditional USB distance constraints with the Lindy Active Extension System Pro. This innovative system utilises advanced repeater technology to extend USB signals seamlessly. Available in both USB 2.0 and USB 3.0/3.2 versions, these cables can function as standalone extensions or be daisy-chained to reach distances up to 60m for USB 2.0 and 40m for USB 3.0/3.2.

A variety of different configuration options are available. For a bespoke setup to meet your needs, please reach out to us and we'll be happy to suggest a customized solution just for you.

USB 3.0 A TO A ACTIVE EXTENSION SYSTEM PRO



- Provides an extended connection between a computer and USB 3.0 device
- Can be used standalone or daisy-chained to create bespoke extension systems of up to 40m
- USB A Male to A Female

8m	No. 43158
10m	No. 43157
15m	No. 43229
20m	No. 43361
30m	No. 43362
10m with 4 Port Hub	No. 43159

USB 2.0 A TO A ACTIVE EXTENSION SYSTEM PRO



- Provides an extended connection between a computer and USB 2.0 device
- Can be used standalone or daisy-chained to create bespoke extension systems of up to 60m
- USB A Male to A Female

8m	No. 42780
12m	No. 42782
30m	No. 42923
8m with 4 Port Hub	No. 42781
12m with 4 Port Hub	No. 42783

USB 3.2 GEN 1 C TO A ACTIVE EXTENSION SYSTEM PRO



- Provides an extended connection between a USB Type C equipped computer and a USB Type A device
- Can be used standalone or as part of the Lindy Active Extension System Pro (see above) to create bespoke extension systems of up to 40m
- USB Type C Male to A Female

5m	No. 43380
8m	No. 43381

USB 3.2 GEN 1 A TO C ACTIVE EXTENSION



- Use as a single extension or is compatible with the USB 3.0 Extension System Pro when used as the last segment in a daisy chain
- USB Type A Male to Type C Female

10m	No. 43376
20m	No. 43375

NEED TO EXTEND MULTIPLE USB DEVICES?



Use the 4 Port Hub Extensions to provide extended reach to multiple USB devices. 8m and 12m USB 2.0, and 10m USB 3.0 versions are available. See the tables above.

USB 2.0 & USB 3.0 ACTIVE EXTENSION

Effortlessly extend between a PC and USB devices. Choose USB 2.0 variants for swift 480Mbps transfers or increase speed with USB 3.0 boasting a rapid 5Gbps. Each cable features USB Type A Male to Type A Female connectors.

5m USB 2.0 SLIM ACTIVE EXTENSION



- Supports transfer rates up to 480Mbps
- Chain up to 5 cables for a 25m reach
- Slim design eliminating the need for bulky plugs
- USB Type A Male to Type A Female

No. 42817

20m USB 2.0 ACTIVE EXTENSION



- Supports transfer rates up to 480Mbps
- Chain 2 cables for a 40m reach
- USB Type A Male to Type A Female

No. 42631

5m USB 3.0 ACTIVE EXTENSION



- Supports transfer rates up to 5Gbps
- For even greater distances simply connect 2 cables in series
- USB Type A Male to Type A Female

No. 43155

10m / 15m USB 3.0 ACTIVE EXTENSION



- 10m and 15m versions
- Chain 2 of the same cables together (to reach 20m or 30m)
- Supports an external power supply (not included) for use with high power devices
- USB Type A Male to Type A Female

10m	No. 43156
15m	No. 43099

3m / 15m USB 3.0 SLIM ACTIVE EXTENSION



- 3m and 15m versions
- Slimmer design eliminating the need for bulkier plugs
- Supports transfer rates up to 5Gbps
- For longer reach, chain cables together (up to 4 cables for the 3m version; 2 cables for the 15m version)
- USB Type A Male to Type A Female

3m	No. 43353
15m	No. 43322

USB 3.2 ACTIVE EXTENSION

Experience the future of connectivity with Lindy USB 3.2 Gen 1 and Gen 2 Active Extension Cables! Harnessing speeds of up to 5Gbps with Gen 1 and a whopping 10Gbps with Gen 2, these cables redefine what's possible in data transfer.

3m / 5m USB 3.2 GEN 1 C/A ACTIVE EXTENSION



- Available in 3m and 5m versions
- Supports 5Gbps data transfer only (no video support)
- Supports an external power supply (not included) for use with high power devices
- USB Type C Male to Type A Female

3m	No. 43352
5m	No. 43344

5m USB 3.2 GEN 1 C/A ACTIVE EXTENSION



- Stylish aluminum design
- Supports 5Gbps data transfer only (no video support)
- Supports an external power supply (not included) for use with high power devices
- USB Type C Male to Type A Female

No. 43270

5m USB 3.2 GEN 1 C/C ACTIVE EXTENSION



- Stylish aluminum design
- Supports 5Gbps data transfer only (no video support)
- Supports an external power supply (not included) for use with high power devices
- USB Type C Male to Type C Female

No. 43271

5m USB 3.2 GEN 1 C/C ACTIVE EXTENSION



- Chain 2 cables for a 10m reach
- Supports 5Gbps data transfer only (no video support)
- USB Type C Male to Type C Female

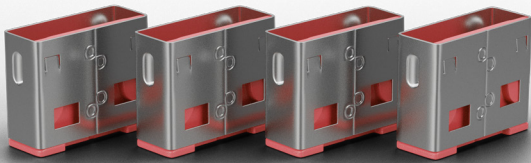
No. 43356

5m USB 3.2 GEN 2 C/C ACTIVE EXTENSION



- Chain 2 cables for a 10m reach
- Supports 10Gbps data transfer only (no video support)
- USB Type C Male to Type C Female

No. 43364



PORT BLOCKERS

USB Port Blockers are useful little devices, used to physically prevent access to USB ports in educational environments.

When paired with corresponding colour-coded keys, these blockers become an effective solution, safeguarding USB ports from unauthorized insertion of pen drives, USB mass storage and mobile devices. Particularly useful for shared workstations and devices in public spaces, USB Port Blockers contribute to maintaining the security and integrity of educational technology setups.

WHAT THEY DO

CREATES a physical barrier to unauthorised access to USB ports

EXPANDS security level when used together with software solutions

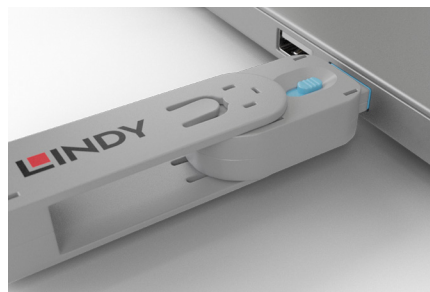
PROVIDES quick and easy installation with no training required

DESIGNED to be used in combination with the key of the same colour

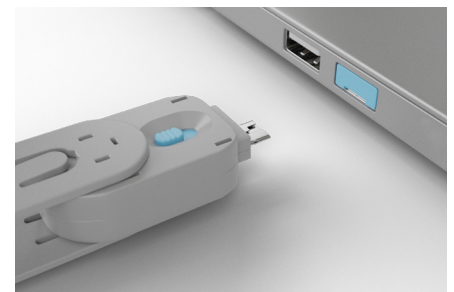
HOW THEY WORK



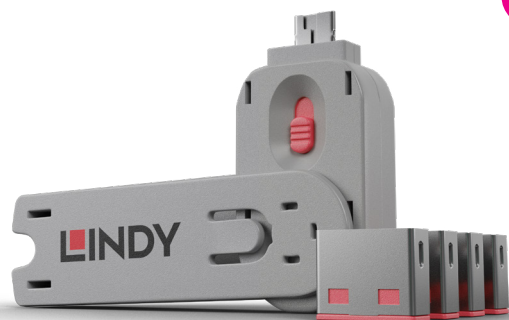
1. A lock is attached to the key and inserted into a USB port.



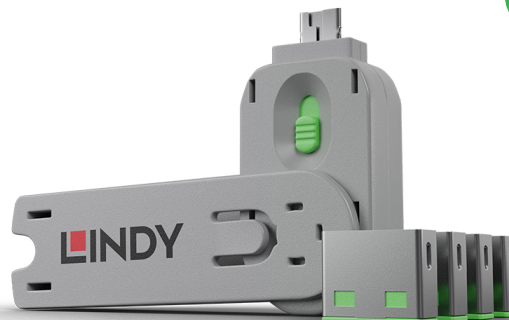
2. The sliding mechanism on the key is then released leaving the lock in place.



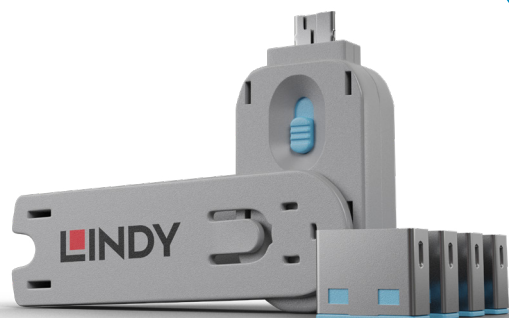
3. To remove the lock the key is inserted into the lock and pulled back, simple!

PINK, USB TYPE A


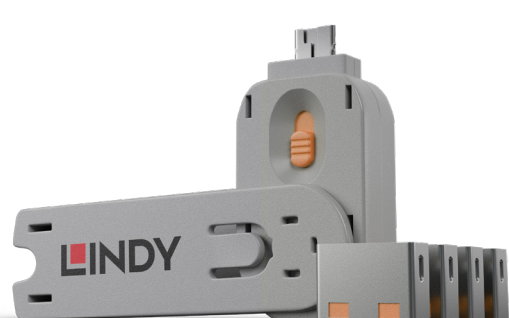
Pack of 4 Locks & Key	No. 40450
Pack of 10 Additional Locks	No. 40460
Additional Key	No. 40620

GREEN, USB TYPE A


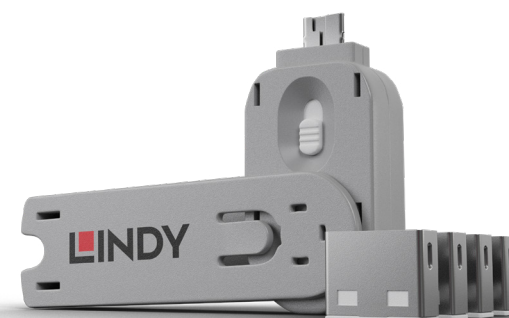
Pack of 4 Locks & Key	No. 40451
Pack of 10 Additional Locks	No. 40461
Additional Key	No. 40621

BLUE, USB TYPE A


Pack of 4 Locks & Key	No. 40452
Pack of 10 Additional Locks	No. 40462
Additional Key	No. 40622

ORANGE, USB TYPE A


Pack of 4 Locks & Key	No. 40453
Pack of 10 Additional Locks	No. 40463
Additional Key	No. 40623

WHITE, USB TYPE A


Pack of 4 Locks & Key	No. 40454
Pack of 10 Additional Locks	No. 40464
Additional Key	No. 40624



Purchase additional locks to colour code your network or use additional keys to add more administrators.



RJ-45 PORT BLOCKERS

The set of four ten RJ-45 locks and one key can be used to easily block up to 10 open network ports and prevent users from connecting cables or devices without permission.

WHAT THEY DO

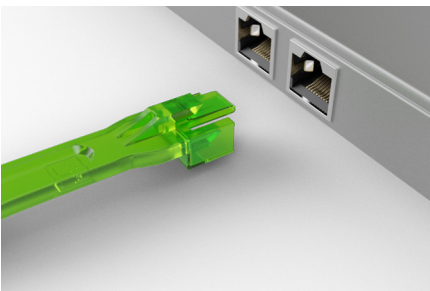
CREATE a physical barrier to unauthorised access to network ports

EXPAND security level when used together with software solutions

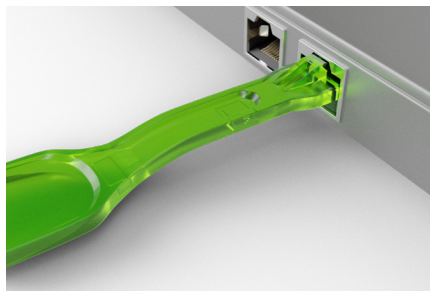
PROVIDE quick and easy installation with no training required

DESIGNED to use in combination with the key of the same colour

HOW THEY WORK



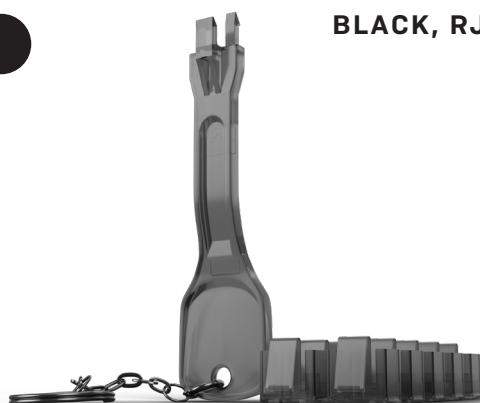
1. A lock is attached to the key and inserted into an RJ-45 port.



2. The sliding mechanism on the key is then released leaving the lock in place.



3. To remove the lock the key is inserted into the lock and pulled back, simple!

**BLACK, RJ-45**

Pack of 10 Locks & Key	No. 40470
Pack of 20 Additional Locks	No. 40471
Additional Key	No. 40630

**GREEN, RJ-45**

Pack of 10 Locks & Key	No. 40472
Pack of 20 Additional Locks	No. 40473
Additional Key	No. 40631

**ORANGE, RJ-45**

Pack of 10 Locks & Key	No. 40480
Pack of 20 Additional Locks	No. 40481
Additional Key	No. 40632

**YELLOW, RJ-45**

Pack of 10 Locks & Key	No. 40482
Pack of 20 Additional Locks	No. 40483
Additional Key	No. 40633



Purchase additional locks to colour code your network or use additional keys to add more administrators.

DOCKING STATIONS

Transform Your laptop into a powerhouse with a Lindy DST Docking Station. Today's modern educators and students need the versatility to work in both the classroom and at home. With a Lindy Laptop Docking Station, you'll get the best of both worlds - the portability of a laptop and the functionality of a desktop.

With a single USB-C connection, you can expand your laptop display to multiple screens and access all your essential USB accessories and peripherals. Plus, with built-in Ethernet, connect to a wired network without any hassle. When it's time to hit the road, simply unplug and you're good to go!

DST-MINI PLUS

USB-C, SUPPORTS TWO DISPLAYS, 4K HDMI & VGA, 100W PASS-THROUGH CHARGING

- Supports 4K@30Hz for HDMI display and Full HD 1920x1080@60Hz for VGA displays
- Supports USB 3.2 5Gbps
- 3x USB Type A, 1x USB-C [Power Delivery], RJ-45, Micro-SD & SD Card Reader



No. 43278

DST-PRO 5K XT

USB-C WITH WITH TRIPLE DISPLAY (4K) OR SINGLE DISPLAY (5K), HDMI & 2x DP, 100W PASS-THROUGH CHARGING, BC 1.2

- Supports 5K@60Hz [DisplayPort] and 4K@60Hz [HDMI] for single and dual display options
- Supports 1x 4K@60Hz & 2x 4K@30Hz for triple display setups
- USB 3.2 5Gbps support
- 3x USB Type A, 1x USB-C [Data], 1x USB-C [Power Delivery + Data], RJ-45, Micro-SD & SD Card Reader, Audio



No. 43349

DST-PRO UNIVERSAL

USB-C & TYPE A UNIVERSAL CONNECTION WITH TRIPLE DISPLAY (4K), 3x HDMI, 2x DP, 100W PASS-THROUGH CHARGING, BC 1.2

- Supports 4K@60Hz for single display option
- Supports 1x 4K@30Hz & 2x 4K@60Hz for triple display setups
- 3x HDMI ports and 2x DP ports for a choice of display connections
- USB 3.2 10Gbps support
- 2x USB Type A, 1x USB-C [Data], 1x USB-C [Power Delivery + Data], RJ-45, Audio



No. 43366

USB 3.2 GEN 1 HUB & GIGABIT ETHERNET CONVERTER



- Connects a USB 3.2 Type C or Type A computer to a Gigabit Ethernet network
- Provides three USB 3.2/3.1 Gen 1 / USB 3.0 Type A ports
- USB 3.2/3.1 Gen 1 / USB 3.0 SuperSpeed data transfer rates up to 5Gbps

No. 43379

SPLITTERS & SWITCHES

In today's dynamic education environment, delivering multimedia content effectively is paramount. Lindy Video Switches and Splitters are the essential tools behind this transformation. Whether it's effortlessly toggling between multiple presenters during a lecture, or simultaneously broadcasting a single presentation across various screens in a large auditorium, these tools ensure seamless knowledge transfer. Simplify tech logistics, engage students better, and maximize the potential of multimedia with Lindy Video Switches and Splitters – the essential tech companions for the modern classroom!

2 PORT HDMI 10.2G SPLITTER

- Supports transfer rates up to 480Mbps
- Chain up to 5 cables for a 25m reach
- Slim design eliminating the need for bulky plugs
- USB Type A Male to Type A Female



 No. 38158

4 PORT HDMI 18G SPLITTER

- Splits a single HDMI 2.0 source across 4 HDMI displays
- Supports resolutions up to 4K@60Hz 4:4:4, with additional support for HDR
- HDCP 2.2 support for enhanced compatibility



 No. 38236

2 PORT HDMI 8K60 SWITCH

- Switches between 2 HDMI source devices when connected to a single display
- Supports 48G resolutions up to 8K@60Hz, with additional support for HDR
- Flexible control via push button, IR remote



 No. 38337

4 PORT HDMI 18G SWITCH WITH AUDIO

- Switches between 4 HDMI 2.0 source devices connected to a single HDMI 2.0 display
- Supports resolutions up to 4K 60Hz, with additional support for HDR
- Extracts digital and analogue audio from the HDMI source device



 No. 38249

POWERING EDUCATION TEN DEVICES AT A TIME!

10 PORT CHARGING STATION

Meet the educator's dream – Lindy's state-of-the-art 10 Port USB Charging Station. Charge up to 10 devices, from tablets to mobile phones, all at once, ensuring no device is left behind. With up to 2.4A charging per port, even the most power-hungry devices will fuel up quickly and efficiently.

- Simultaneous charging of up to 10 tablets, mobile phones and other USB devices
- Max. 2.4A charging per port, simultaneous use of all 10 ports allows max. 1.8A charging per port
- Smart charging function adjusts the current for optimum, safe charging
- Best selling product - used in education, retail and industry



No. 73309